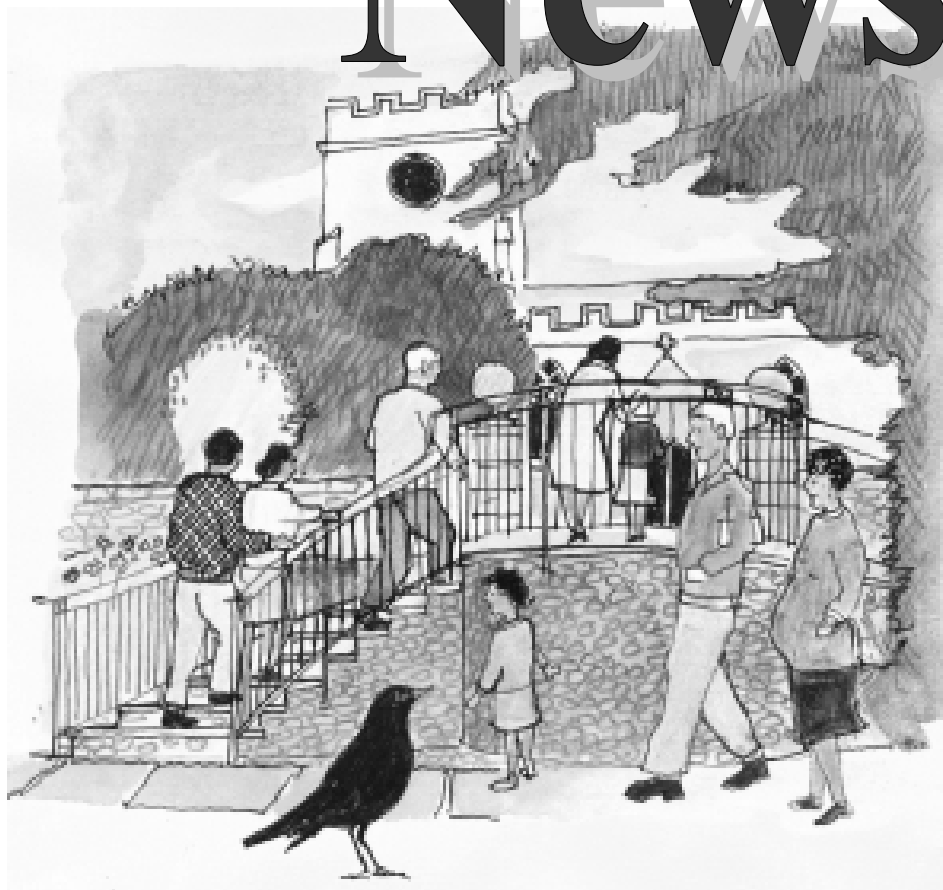


St. Peter & St. Paul, Uplyme

# Parish News

May  
2007



**“The Russians are coming”.....!**

**Christian Aid week 13th - 19th May.....!**

**“Brother John” to rock the aisles.....!**

Production cost **50p**

A voluntary contribution is gratefully received

## Services in May and the beginning of June

### MAY

Wednesday 2 <sup>nd</sup> May	10.30am	Holy Communion (BCP said)
6 <sup>th</sup> May	8.00am 10.00am 6.00pm	Holy Communion (BCP said) Morning Prayer (BCP sung) Praise Service
13 <sup>th</sup> May	10.00am  6.00pm	Family Communion... ..Creche and Junior Church in school NO Second Sunday Forum – Restarts in the Autumn
Thursday 17 <sup>th</sup> May ASCENSION DAY	10.30am	Holy Communion (BCP said)
20 <sup>th</sup> May	8.00am 10.00am 6.00pm	Holy Communion (BCP said) Family Service Evening Prayer (BCP sung)
27 <sup>th</sup> May	10.00am	Parish Communion... ...Creche, 11+ and Junior Church in school

### JUNE

3 June	8.00am 10.00am 6.00pm	Holy Communion (BCP said) Morning Prayer (BCP sung) Praise Service
Wednesday 6 <sup>th</sup> June	10.30am	Holy Communion (BCP said)
10 <sup>th</sup> June	10.00am	Family Communion... ..Creche and Junior Church in school

### Parish News Information

Please remember the next issue of the magazine is for **JUNE** all articles up to and including things in early JULY should be with us by the **10<sup>th</sup> MAY**. The best way to get things to us is by email to:

**parishnews@uplymechurch.org.uk**

**Or leave in the pigeon hole in Church under "H" for my attention.  
Robin Hodges**

# May



2007

## CONTENTS

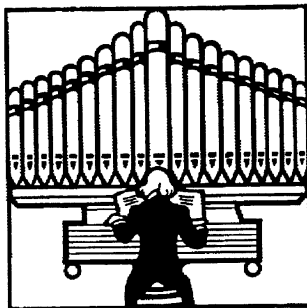
May & early June Service times	Inside front cover
Contents	1
Food for thought—Oliver Edwards writes	2
Brother John to Rock the Aisles	3
Editors Letter	3
Men 8 - 80 and Uplyme WI	4
Mothers Union & Christian Aid Week News	5
The Pulpit by Jack Thomas	6
Ivan & Jenny's Gardening Page	7
Village Fete News	8
Royal British Legion Women's Section	8
Out and about with John Pennington	9
Village Hall Booking Dates	10 & 11
Village Hall News & Cartoon	11
Blagovest! Coming to Uplyme!	12
April Crossword Answers	12
The Full Poodle Computer Tips	13
The Family Page organised by Iris Cox	14
Parish Council Report	15
May Crossword	16
Local Adverts	Inside back cover
From the register & Church Officers	Back Cover

### PARISH NEWS DISTRIBUTION

A new distributor is urgently required for the Rocombe area - some 20 houses.

We are grateful to Mrs Anderson for her years of service but as she will shortly be leaving Uplyme, a replacement is required.

If you can help (10 monthly deliveries) please contact David Coates on 01297 445283.



After a quick look to check he was alone,  
Brian launched into  
'I Do Like to be Beside the Seaside'.

## Food for Thought

Two small events recently showed that had I read the instructions, then the problem would have been solved more easily and quickly.

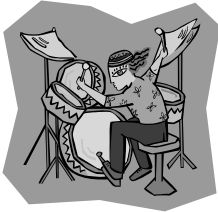
1. Putting up a ready-made travel cot should be a simple matter. Un-wrap it from the box, place on the floor, lift and lock and the job would be complete! 5 minutes later, cot still not up and my frustration was growing. It was then my wife tactfully suggested I look in the box to see if there are any instructions. One sheet of paper is found with a simple sequence of how to put up the cot - one minute later the cot is ready for baby to sleep in!
2. Whilst driving to church I noticed the interior light was on in the car, but I was unable to find how to switch it off. This subject then dominated our conversation for the rest of the journey. After parking the car I struggled to find any switch that would put the light out. By now my wife had left me and was sitting in Church, while my concern was to avoid a flat battery. As a last resort I turned to the manual and within 30seconds the problem was solved. Had I done this in the first place the problem would have been quickly sorted out.

In everyday terms these are very simple events but highlight a basic truth. Reading, referring to manuals and instructions are helpful and can help us solve and put problems in perspective. In these days people have very busy lives and this can result in all sorts of issues and pressure points, often questioning the meaning of life.

There is a book called The Bible which is the ultimate guide, along with the Holy Spirit, which helps us realise what is wrong with our lives and also gives us a purpose and sense of direction. However, most people believe they can live without God's word and do things in their own strength – so it is no surprise that many individuals and families lives are unhappy, in chaos, and exist without enjoying life. Being a Christian is not easy but without God in our lives the aims and purpose of life are not clear to understand.

So there it is – God has given us a wonderful resource in his word – THE BIBLE. The more we read it the more we understand the true meaning of life. 2 Timothy ch.3 v.16 says “All scripture is inspired by God and is useful to teach us what is TRUE and to make us realise what is wrong with our lives. It straightens us out and TEACHES us what is right. Food for thought.

*Oliver Edwards*



## **Brother John to rock the aisles!**

Always liked the idea of going to church, but enjoy something more up-tempo than regular hymns? Every first Sunday of the month at 6pm Uplyme Church holds a youth service aimed at creating a space for God within a more contemporary service. Guitar driven worship glues together a youth orientated event to create space to meet with God, get to know him better and share doughnuts with each other! You'll meet others with the same heart and mind as people come from all over the area to join in with a fun, but sacred atmosphere.

On the 6th May there's an even bigger treat - Brother John, an Ilminster based rock band, will be leading the music and following with a short set of their own songs in the church. Those of you who've been to Spree camp will know who they are already! They've played all over the country and have a big following locally. Expect strong rock songs with a melodic edge. Turn up early for a good moshing spot!



Call Irve Griffiths, Youth worker, for details.  
01297 444621 or 07939 079 062.

---

## **A Brief Word from the Editor**

A warm welcome to this May Issue of The Parish News!

There is plenty to do in and around the village over the next few months. So apologies if this sounds more like a 'date's for your diary' than a letter!

For those music lovers amongst you:

The Lyme Bay Chorale society are presenting a mixed programme of 16<sup>th</sup>-20<sup>th</sup> century music on Saturday 20<sup>th</sup> May (details from Gaby Martelli on 01308 488348)

The Blagovest Ensemble will be at Uplyme Church Monday 21<sup>st</sup> May (details on page 12 )

For those theatrically minded: the Bethany Chapel in Lyme Regis are presenting a selection of 'Tales from the Courtroom,' on Sunday 27<sup>th</sup> May at 4pm

And lastly for those of you who enjoy summer or Garden Fairs, there is a plethora over the next few months. Including Colyton Grammar Garden Fair on Saturday 12<sup>th</sup> May 10am-4pm, where the Colyton School Belly Dancers will be performing.

Also an open Garden afternoon on Sunday May 13<sup>th</sup> in aid of action medical research, and not forgetting off course The Village Fete on Saturday 16<sup>th</sup> June.

As I said plenty of going on and something for everyone. Enjoy!!!

Regards Ed

Ps for those feeling really energetic bring a wheelbarrow to the Churchyard on Saturday May 19<sup>th</sup>. At 9.00am !!!

## Men: 8-80

Although few turned out, the skittle evening was a great success. Just in time before the Skittle Alley at The Talbot is to be demolished.

Our events for **May and early June** are:

- **Boules at the Church on Wednesday 23 May 2007 at 7pm, Ladies are very welcome to attend. Teas, coffee, bring your own wine if you wish. There will even be time for a drink afterwards in The Talbot for those who wish to.**
- **Saturday 2 June 2007, a walk through the Undercliffs, organised by our very own George Allhusen. NOT TO BE MISSED. We assemble at 9.30am at Whitlands. We'll visit Goat Island, walk along the cliff tops and take lunch (bring your own) on "The Plateau" looking down on Charton Bay. The walk will conclude back at Whitlands at approximately 2.30pm, but for those who want to make it a longer walk, there is the option to walk to Lyme Regis either along the coast path (low tide is 1.30pm) or via the coast path. More precise details including a map etc will be available nearer the time. A rare opportunity to see and hear about an area so close to our homes from someone who in is the 'know'!**

Further details can be obtained from;  
Terry Daly (445541), Mike Whittome (445744) or Mark Trafford (443252).



### UPLYME WOMEN'S INSTITUTE

The President, Lillian Bagnall, welcomed members and friends to the 83rd birthday meeting on 11th April.

An arum lily won Win Symonds the Flower of the Month competition and Joan Cool's Easter biscuits was the winner of the Home Economics' competition.

The afternoon passed very pleasantly with a quiz, raffle and chat and Treasurer Betty Wood made a splendid iced and decorated fruit cake for tea.

The next meeting will be on May 9th at the Village Hall. Visitors welcome.

*Shirley Hobden*



THE MOTHERS' UNION

## MOTHERS' UNION

We sent two large boxes of flowers to churches in Bermondsey for their Mothering Sunday services. On March 21st we attended Exeter Cathedral for the Service of Commissioning new officers in the Mothers' Union, and four of our members were in the Choir.

Our April meeting was a very happy one. Jenny Buckle was our speaker - she is well known to us and we greatly enjoyed her talk on The Three B's - The Bible, Belief, and her Bees.

Next month on May 3rd our speaker will be Connie Hartnell - a Farmer's Wife. Visitors are welcome - 2.30 pm in the church.

*Letter received from Bermondsey to Uplyme Mothers Union reads:*

***Thank you so much to you and all your Church and those who donated the flowers for our Mothering Sunday Service. They were very special and much appreciated by Mums and children alike.***

*Signed Stuart and Rosemary.*

Iris Cox

---

## Christian Aid Week, 13-19 May 2007.

### The central message

Christian Aid Week is seven amazing days of fundraising, prayer and action against global poverty. We want people to add their time, money and voices, and see them multiplied to make an impact around the world through Christian Aid. 'You add, we multiply'. [www.caweek.org](http://www.caweek.org)

It is now May and Christian Aid Week is upon us, please give generously for this fantastic cause, but we also need your prayers and action against global poverty.

Our collectors will be calling soon; if they do miss you please return your envelope to our local Village Shop/Post Office, where a collection box will be sited.

Margaret and Mark Trafford.  
01297 443252.



## The Pulpit

*Pulpit* – Middle English, from *pulpitum* (Latin), a scaffold or raised platform from which the preacher in a church can deliver a sermon.

Our venerable pulpit was built in 1616 (the date is scratched on its top). Shakespeare died that year, author of 36 plays and 150 sonnets. So did Cervantes, writer of the first great novel, *Don Quixote*. The Inquisition condemned Galileo for his view that the earth moves round the sun (“*e puer si muove,*” he said under his breath). James I was half way through his reign when our pulpit welcomed its first preacher, Samuel Norrington, Rector of Uplyme for 30 years, following in the footsteps of his father, Simon Norrington, who had been Rector in Queen Elizabeth’s reign for 49 years. Simon would have preached from the Authorised Version of the King James Bible, which was a mere five years old in 1616. The *Mayflower* would sail for New England in four years’ time, though our colony at Jamestown in Virginia was already 9 years old.



Our pulpit which is five-sided and made of oak has been embellished by its wood carver with emblems of the lily or fleur-de-lys. The lily in Christian iconography symbolises purity and is particularly associated with the Virgin Mary. It features especially in the Annunciation. Renaissance artists such as Leonardo da Vinci, Fra Angelico or Jan van Eyck depict the Archangel Gabriel with a lily in the presence of the Blessed Virgin Mary as she is told that she is to be the mother of Christ. The French of course way back in the 5<sup>th</sup> century under King Clovis adopted it as their national emblem.

Since 1616 the word of God has been preached by a succession of parsons from our pulpit. There have been two sermons every Sunday for 52 weeks in each year for 391 years (the mathematics are mind-boggling). That makes at least 40,664 sermons. And the Good News continues....

**I**n the beginning was the Word  
And the Word was with God.  
And the Word was God.

*Jack Thomas*



## Entwood Farm Plants of Harcombe Tel 01297 444034

You may have heard of the Pitt White Bamboo Garden at Tappers Knapp which was created in the 50s and 60s by Dr Mutch and his gardener Alexander Lawson. It contained the most comprehensive collection of temperate bamboos in Europe, and probably the world, with many of the Bamboos they collected being the first to be brought into this country. On Friday 13<sup>th</sup> May we were lucky enough to participate in a guided tour of the garden, led by Mike Bell President of the Bamboo society. He has been instrumental in trying to save the Pitt White collection over the years – he is the national collection holder of Phyllostachys, and jumped at the chance to visit Pitt White again. Sue Brunner made the arrangements and over 30 people listened to Mike as he explained some of the history of bamboos and their growing habits.

Although many bamboos have either died or been 'liberated' from the garden there are several fine clump forming specimens, including a *Thamnocalamus spathiflorus*, *Phyllostachys nigra* and *Chuquea couleou*. As Mike explained some of the bamboos at Pitt White are not 'garden' plants - they are too invasive and give bamboo a bad name. But when Dr Mutch owned the garden not enough was known about the habits of bamboo, so a tropical looking *Pleioblastus* was seen as an asset – little did they know it would almost take over parts of the garden in the future. It was well worth their effort as it makes a spectacular fountain in a 'secret' garden that time forgot. It is the sort of place you can sit listening to the birds feeling you are miles from anywhere – wonderful.

Having left the magic of Pitt White some of the group visited our nursery viewed the garden and our own collection of bamboo, and enjoyed tea and cake. All in all a lovely afternoon – so thank you to Sue and the horticultural society for organising it all.

**The nursery is open – April to September - Wednesday to Saturday - 10 – 5pm**

**March and October - Saturday only**

Look forward to meeting some of you then  
Ivan and Jenny Harding, Entwood Farm  
Plants,  
Harcombe, Uplyme



**WANTED – On Saturday May 19<sup>th</sup> at 9am, as many people as possible. Male or female, adult or children, armed with wheelbarrows to empty the garden waste in the churchyard rubbish dump.**



This years Village Fete is to be held on Saturday 16th June, at the Village Hall and on the playing field. This year the fete will be opened by Mary Benger of Burrow Farm Gardens.

The procession starts from Mrs Ethelstone's School at 1.50pm. It will be led by Elliott Dale's Bentley, carrying Mary Benger, the fete Prince, Princess and Page. Following on behind will be The Lyme Junior Band, The Karizma Majorettes, The Cubs, The Beavers, The Brownies and all fancy dress entrants. The Fete Prince, Princess and Page will be chosen from village children, under the age of 11, who submit a picture of a SCARE-CROW, drawn on A4 paper, with name, age and telephone number on the back. Pictures are to be handed in no later than Friday 18th May, to the school, the post office or pre-school. Pictures will be judged by Catherine Anholt, and the theme for this years fancy dress will be SCARECROWS.

Proceeds of the fete help in running and maintaining your Village Hall. If you would like to sponsor the fete, book a stall or help, please telephone Paula on 445185.

Many Thanks - Paula Wyon-Brown

---

### **ROYAL BRITISH LEGION WOMEN'S SECTION Uplyme Branch**

Our April meeting was a talk by Nigel Ball on 'Springtime in the garden'. Nigel has spoken to us before and is always a most welcome guest. This time he was, as usual, very entertaining and informative, producing a variety of spring flowers to show just how beautiful a springtime garden can be. For added fun and entertainment he asked a number of questions about the exhibits and awarded the winner - Mrs Maura Large - a suitable prize. There were several knowledgeable ladies among the interested audience so a lively discussions followed.

Tea and biscuits concluded the afternoon.

Our next meeting is on May 14th when the guest speaker will be Tony Burt on 'A day in the life of a postman'. All are most welcome to join us.

Pat Day, who has organised our Mystery Tour on June 4th has asked all those members who have not already paid (£12 per person) to pay by 14th May at the latest.

Pat Carroll

## Out and About with John Pennington

The Pennington family and friends recently enjoyed a walk to Axminster. It was a glorious day, and we took a route that went up Woodhouse Hill, through the woods at the top, across Trinity Hill, down a track to the hamlet of Wyke Green and across the fields into Axminster. There are some magnificent and very aged beech trees in the woods - well worth a look if you have never been up to Woodhouse. The highlight of the walk for the children was finding a glow-worm larvae on the lane leading to the woods. They, of course, wanted to take it home. But it was put back on the verge to light up the summer evenings.

As we wanted to get home in time for the boat race we took the bus and alighted in Uplyme, adjacent to the forlorn and neglected little public garden at the top of Crogg Lane. What a shame this patch of land has been left over the last few years. It must have been lovely at one time and now needs a facelift to bring it to life again. I don't think I've ever seen anyone sitting on the benches in the garden. Who's responsible for it I wonder.....?

Whilst looking at the ordnance survey map of the area to decide on the route I was going to take, I noticed Raymonds Hill, which is a village in its own right these days! Who was Raymond? Do any readers know? Perhaps Raymond was mentioned in the Domesday book? Although somehow I doubt it!



Whilst writing this I have received a email about butterflies in Uplyme. It seems that there are already a couple of keen spotters, who would very much like any species I come across for their records. I've seen four so far and am confident the continued good weather will produce many more. If you have access to the internet and would like help identifying butterfly species, have a look at [www.ukbutterflies.co.uk/identification.php](http://www.ukbutterflies.co.uk/identification.php)

Until June .....

*JP*

## Village Hall Booking dates for May & Early June 2007

### MAY

#### **Tuesday 1 May**

9.00am-12.00 Pre-School  
 1.30pm-3.30pm Toddlers  
 5.00pm-6.00pm Tai Chi  
 6.30pm-7.30pm Private hire  
 7.30pm Social Club  
 Meeting Room  
 7.30pm Village Hall Committee

#### **Wednesday 2 May**

9.00am-12.00 Pre- School  
 1.30pm-4.30pm Patchwork Group

#### **Thursday 3 May**

9.30am-4.30pm School  
 4.30pm-6.30pm Ballet

#### **Friday 4 May**

9.00am-12.00 Pre-School  
 12.15pm-3.15pm Pre-School  
 3.45pm-5.00pm Children's Tennis

#### **Saturday 5 May**

8.30am-midday Horti Soc. Plant Sale  
 7.00pm - 11.00pm Mainly Ballroom

#### **Sunday 6 May**

9.30am-11.30am Quakers  
 6.00pm-7.00pm Private hire

#### **Monday 7 May**

Bank Holiday - nil

#### **Tuesday 8 May**

9.00am-12.00 Pre-School  
 1.30pm-3.30pm Toddlers  
 5.00pm-6.00pm Tai Chi  
 6.30pm-7.30pm Private Hire  
 7.30pm Social Club  
 Meeting Room  
 7.30pm-10.00pm Pre-School committee

#### **Wednesday 9 May**

9.00am-12.00 Pre- School  
 2.00pm-4.30pm WI  
 7.00pm-10.00pm Parish Council

#### **Thursday 10 May**

9.30am-4.30pm School  
 4.30pm-6.30pm Ballet

#### **Friday 11 May**

9.00am-12.00 Pre-School  
 12.15pm-3.15pm Pre-School  
 3.45pm-5.00pm Children's Tennis  
 6.00pm-9.00pm Children's party

#### **Saturday 12 May**

2.00pm-5.00pm Private hire

#### **Sunday 13 May**

9.30am-11.30am Quakers  
 6.00pm-7.00pm Private Hire

#### **Monday 14 May**

9.00am-12.00 Pre-School  
 2.00pm-4.30pm Royal British Legion  
 4.30pm-5.30pm Ballet  
 5.30pm-7.00pm Brownies  
 7.30pm Short Mat Bowls

#### **Meeting Room**

7.30pm-9.00pm Horticultural Society

#### **Tuesday 15 May**

9.00am-12.00 Pre-School  
 1.30pm-3.30pm Toddlers  
 5.00pm-6.00pm Tai Chi  
 6.30pm-7.30pm Private Hire  
 7.30pm Social Club

#### **Wednesday 16 May**

9.00am-12.00 Pre-School

#### **Thursday 17 May**

9.30am-4.30pm School  
 4.30pm-6.30pm Ballet

#### **Friday 18 May**

9.00am-12.00 Pre-School  
 12.15pm-3.15pm Pre-School  
 3.45pm-5.00pm Children's Tennis

#### **Saturday 19 May**

7.00pm-11.00pm Mainly Ballroom

#### **Sunday 20 May**

9.30am-11.30am Quakers  
 6.00pm-7.00pm Private hire

#### **Changing Rooms**

4.00pm-8.00pm Gillingham Trotters

#### **Monday 21 May**

9.00am-12.00 Pre-School  
 4.30pm-5.30pm Ballet  
 5.30pm-7.00pm Brownies  
 7.30pm Short Mat Bowls

#### **Tuesday 22 May**

9.00am-12.00 Pre-School  
 1.30pm-3.30pm Toddlers  
 5.00pm-6.00pm Tai Chi  
 6.30pm-7.30pm Private Hire  
 7.30pm Social Club

<b>Wednesday 23 May</b>	
9.00am-12.00	Pre-School
7.00pm-9.30pm	Hortic Society Talk
<b>Thursday 24 May</b>	
9.30am-4.30pm	School
4.30pm-6.30pm	Ballet
<b>Friday 25 May</b>	
9.00am-12.00	Pre-School
12.15pm-3.15pm	Pre-School
3.45pm-5.00pm	Children's Tennis
<b>Sunday 27 May</b>	
9.30am-11.30am	Quakers
6.00pm-7.00pm	Private hire
<b>Monday 28 May</b>	Bank Holiday - nil
<b>Tuesday 29 May</b>	
6.30pm-7.30pm	Private Hire
7.30pm	Social Club
<b>Wednesday 30 May</b>	
Nil	
<b>Thursday 31 May</b>	
7.30pm-9.30pm	Community Players

**JUNE**

<b>Friday 1 June</b>	
From 6pm through to	
<b>Saturday 2 June</b>	
All day to midnight	Private Hire
<b>Sunday 3 June</b>	
9.30am-11.30am	Quakers
2.00pm-6.00pm	Community Players
6.00pm-7.00pm	Private Hire
<b>Monday 4 June</b>	
9.00am-12.00	Pre-School
4.30pm-5.30pm	Ballet
5.30pm-7.00pm	Brownies
7.30pm	Short Mat Bowls
Meeting Room	
7.30pm-9.00pm	Horticultural Society

These booking times are not necessarily start times of events - please see other publicity. For bookings & enquiries about the Village Hall please contact : **Margaret Wiscombe, Hall Manager, on 01297 443819.**

**Village Hall News**

The Committee has been approached by a company who screen cinema films in Village Halls! We would like to see if there is any call for this, and if anybody is interested in attending a film night. Please let me know by telephone - 01297 442960. Also if there are any local groups who would like to take on a screening as a fund raising event, I have all the details.

There are 2 dates for your diary in June, firstly the Village Hall AGM, see details below, and secondly June 16th is the annual Village Fete

Gill Bullock, Secretary



*...can you believe I've not yet seen one of those new £20 notes? But now's your chance to change all that!*

## **BLAGOVEST --- COMING TO UPLYME!!**

The real thing. Nothing like it. Once you've been to a soccer match, a gig, a concert, the theatre, or any 'live' event, you know it's true: there's nothing like the real thing. That's why, despite how much it costs to support them, live events continue to thrive and even wrinklies like the Rolling Stones are touring to capacity houses.

But many of us can't manage it. It's not just the ticket money, it's the getting there and back. St Petersburg is the Russian capital of music. It would be nice to be able to hop on a plane and go to a concert there given by top class singers. Or if they came on a UK tour, how nice to afford the £50 ticket to see them perform at the Albert Hall.

Wouldn't it be amazing if, for once, they came to us? Came to our own town for the kind of ticket price we are used to, or even just accepted a thanksgiving collection from us, along with our warmest Uplyme hospitality?

The St Petersburg Blagovest Ensemble are doing exactly that. Blagovest means 'good news' and that is what they bring. Russia's sacred choral music, penned by her greatest composers, was banned during the Soviet regime, and many unperformed works lay gathering dust in the vaults of the St Petersburg Conservatoire, the oldest music school in Russia. Thanks to people like Olga Kozlova and her five friends, this music is resounding through the churches and halls of Europe once again.

They sing everything unaccompanied, both their sacred and their folk songs. Their voices weave a tapestry of sound that leads the listener into another realm. The secret of Blagovest's sound is that each voice is top quality, but they submit their individual gift to the unity of the ensemble. Even during their solos, which they obviously enjoy, they are mindful of the other five voices that are supporting them in the background. No gimmicks. Just the most beautiful voices imaginable coming to sing for US. Live!

### ***Blagovest***

***Olga, Kate, Nastia, Vitaly, Nikolay and Yuri,  
will be performing  
on Monday 21<sup>st</sup> May at 7.30pm in Uplyme Church***

***Tickets are not required but there will be a retiring collection.***

***Further info from Gill McMenemy in the Church Office 444499***

### **APRIL CROSSWORD ANSWERS**

#### Across

8 Showers 9 Intro 10 Altar 11 Ephraim 12 Lent 14 Strength 17 Suzerain  
19 Wrap 21 Warrior 22 Weave 24 Satis 25 Apostle

#### Down

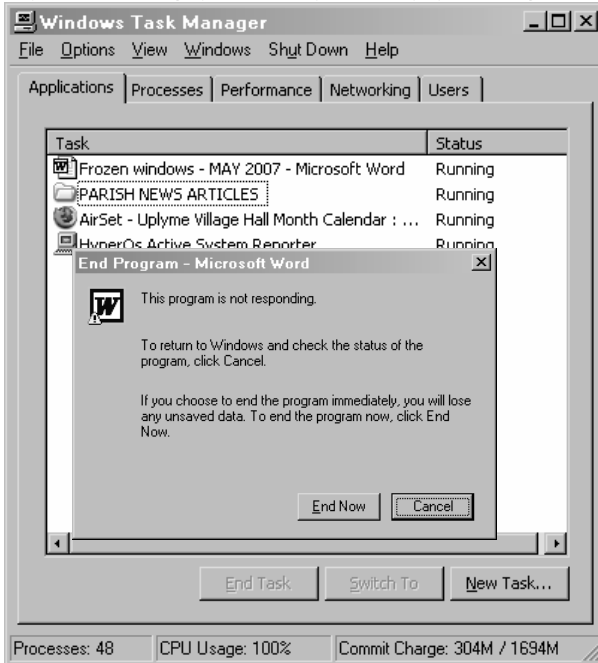
1 Israelis 2 Boot 3 Weary 4 Ascent 5 Fighter 6 Stranger 7 Loom 13 Nazareth  
15 Happened 16 Traipse 18 Inroad 20 Swoop 21 Wash 23 Acts

## FROZEN WINDOWS? by The Full Poodle - 443819



At some time your computer will freeze on you. It will refuse to close down a program and nothing works. This shouldn't happen but it does. Don't assume there's a terrible fault with your computer. System freezing has many causes and most are just a temporary software conflict (easy for me to say!)

Try defrosting your computer by pressing the Ctrl Alt Delete keys



together.

Windows XP will bring up the Task Manager window.

You will see a list of programs, or 'applications' which are currently running. Find the program which is frozen (usually has *Not responding*) and click on it. Then click on the 'End Task' button at the bottom of the Task Manager window. An End Program window opens.

Click on the 'End Now'

option. You will lose unsaved work but you have little choice at this stage. If this doesn't work, more drastic action is required. Try turning your machine off & then back on again pressing the power button on the case for several seconds. Still no response?

Aaarrgghhh! Turn it off at the wall socket - but this should be a LAST RESORT and is not recommended - only do this if all else has failed.

Margaret Wiscombe

*The Full Poodle, Computer Repair & Training*

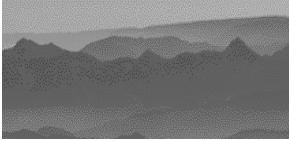


## Family page organised by Iris Cox

Pastoral (Evening)



Now from the meadow floods the wild duck clamours,  
Now the wood pigeon wings a rapid flight,



Now the homeward rookery follows its vanguard,  
And the valley mists are curling up the hills..  
Three short songs gives the clear-voiced thristle,  
Sweetening the twilight ere he fills his nest,  
While the little bird upon the leafless branches  
Tweets to its mate a tiny loving note.

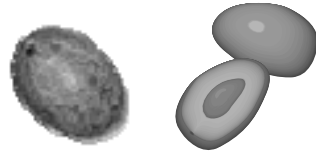
Deeper the stillness hangs on every motion  
Calmer the silence follows every call  
Now all is quiet save the roosting pheasant,  
The bell-wether's tinkle, and the watch-dogs bark.



George Meredith

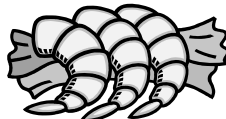
### Seafood with mango

1 avocado  
1 mango  
10 cooked king prawns  
Quarter cup bottled French dressing  
2 tablespoons lemon juice  
2 tablespoons mayonnaise  
2 tablespoons mild chilli sauce  
Pepper  
1 tablespoons chopped chives  
Curly endive or lettuce



1 Peel and slice the mango and avocado and shell the prawns; combine together.  
2 Add lemon juice and pepper to French dressing and pour over the above - leave for 10 minutes  
3 Combine mayonnaise and chilli sauce, drain dressing from prawn mixture, mix all together, then pour back over prawns and fruit.  
4 Refrigerate until required, and serve on a dish of endive and sprinkle with chives.

IRIS COX





## **Report on Uplyme Parish Council Monthly Meeting held on 11<sup>th</sup> April 2007**

### **Planning**

#### **Applications Refused by East Devon District Council**

Little St Marys, St Marys Lane. Erection of log cabin

#### **Applications Granted by East Devon District Council**

Valley View Farm. Re - siting and change of use of existing caravan to holiday let.

Land at Burrowshot, Lyme Road. Access works and embankment

#### **Applications considered**

Brooklands, Lyme Road. Two storey extension. *The plans for this application lack detail. More information is required on the position of the dormer windows. Also, there are inconsistencies between the ground floor and first floor plan. More detail is needed about the relationship and effect on the immediate neighbours. History dictates that every detail must be shown before the plans are considered by East Devon District Council so that all parties are aware of what exactly is entailed.*

*Refusal Recommended.*

Dashwood House, Lyme Road. Fell one beech tree. *There are concerns about the viability of this tree. It may be possible to save with some skilled pruning. However, this could look very unsightly. The best option may be to fell and replace with a similar tree. Beech is not drought resistant and with increasing dry summers a Hornbeam would be a viable alternative*

Devon Hotel Amendments to planning permission 02/P2847 including deletion of car parking to the rear to provide for terraced amenity area. *The Parish Council has no objections in principle but is aware of the concerns of the immediate neighbours with regard to the lack of stability caused by the construction of the terracing. Additionally, because of the height of the terracing they have concerns with regard to their right to privacy.*

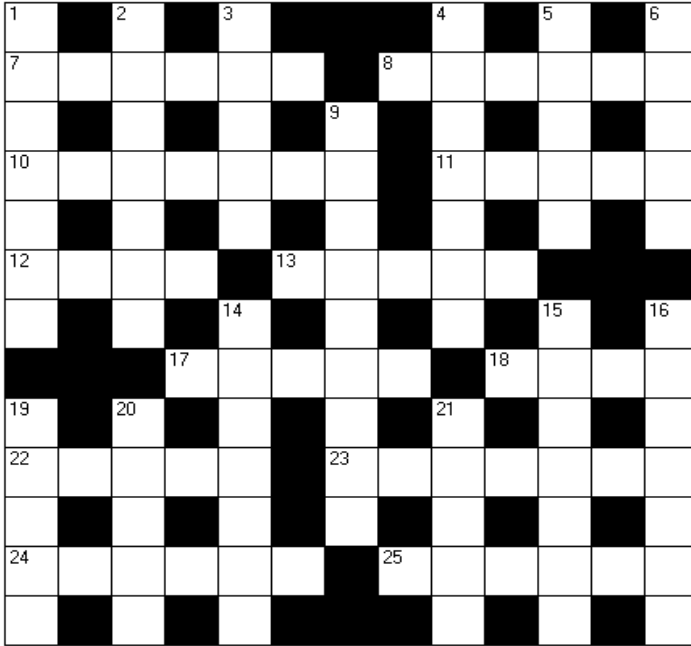
Carnbrae, Woodhouse Hill Amended Plans. Replacement barn and stables. *No objections. Approval Recommended*

**Children's Playground.** Donations continue to be received towards further playground equipment. £391 has been collected so far this financial year commencing 1<sup>st</sup> April. There is still along way to go so anyone feeling they would like to contribute please contact Jonathan Clarke-Irons - tel. 01297 32697.

**Trinity Hill Nature Reserve** The Parish Council has now heard from East Devon District Council and it is planned that a representative will come and give a presentation immediately preceding the Parish Council meeting in June.

Charles White, Parish Clerk

## MAY CROSSWORD



### Across

- 7 ..a \_\_\_\_ to accuse Jesus (Matt 12.10) (6)  
 8 ..greed, \_\_\_\_, deceit, lewdness (Mark 7.22) (6)  
 10 Jericho's king sent one to Rahab in Joshua ch. 2 (7)  
 11 Its capital is Lhasa (5)  
 12 Far eastern country (4)  
 13 Like the arrows in Psalm 45 (5)  
 17 Like stolen water, according to Proverbs ch. 9 (5)  
 18 The remains of Babylon can be found in this country (4)  
 22 Christian symbol (5)  
 23 e.g. Doeg in 1 Samuel ch. 21 (7)  
 24 Plant of pea or bean family (6)  
 25 Substitute (6)

### Down

- 1 Fall into tiny pieces, like the ancient mountains in Habakkuk ch. 3 (7)  
 2 The sufferings and death of Christ (7)  
 3 One of the recipients of the first epistle of the NT (5)  
 4 Isaiah ch. 65 predicts that Sharon will become one (7)  
 5 Job ch. 40 compares the behemoth's to rods of iron (5)  
 6 A king's wrath is its messenger, according to Proverbs ch. 16 (5)  
 9 Birthplace of Jesus (9)  
 14 Looking like an angel of God, as in Judges ch. 13 (7)  
 15 One of the manual workers exiled from Jerusalem in Jeremiah ch. 29 (7)  
 16 Compress, as Gideon compressed the fleece in Judges ch. 6 (7)  
 19 Climb (5)  
 20 Smithy (5)  
 21 Joseph said to Pharaoh's \_\_\_\_ (Gen 50.4) (5)



The Lyme Regis Action Medical Research Committee  
are holding an

# Open Garden Afternoon

with cream teas  
and a bring and buy plant stall

at  
Lower Ware, Ware Lane  
Lyme Regis  
*(by kind permission of Mr & Mrs McGarry)*

on  
**Sunday 13th May 2007**  
2.30 ~ 5.30pm

Raffle ❖ Stalls

Entrance £1



Raising funds for  
**action medical research**  
give and let live

Registered Charity No. 208701      [www.action.org.uk](http://www.action.org.uk)

## Save the Children Coffee Morning

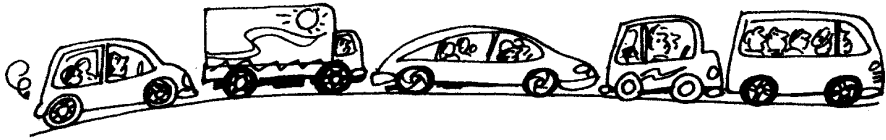
At

**Abbeyfield, Silver  
Street, Lyme Regis**

on

**Friday 1st June  
at 10.00am -  
12.00noon**

**£1 - includes coffee  
and biscuits  
Cake Stall - Sale of  
Gifts - Raffle**



## Cottage to rent in Provence

Charming, beautifully furnished 2 bedroom character cottage with stunning views in Rosans, a medieval hilltop village set in lavender country near to where the Alps meet the Cote du Rhone.

Superb weather from April to October, 300 days sunshine per year.

Sleeps 2-6. The cottage is available for a very reasonable rate per week, fully inclusive of linen, welcome pack, of which we will donate a percentage of the money towards church funds.

For more details & photos see '[members.aol.com/rosanscottage](http://members.aol.com/rosanscottage)' "convenient flights from Exeter Airport to Avignon from the end of March 07 with Flybe"

Please call Samantha Pennington on 01297 444432 if you are interested.



## From the Registers

### **Baptisms:**

1 April Daniel Barton

15 April Lewis Morgan

### **Marriages/Blessing:**

Nil

### **Funerals/Interment of Ashes:**

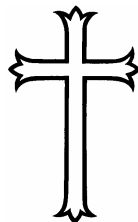
20 Mar. Ralph Thorn

23 Mar. Barbara & Lionel Childs

3 April Mara Dickinson

5 April Frank Tristram

YOUR  
LEGACY  
TO THE CHURCH



HAVE YOU MADE ONE  
WHY NOT SEE YOUR  
SOLICITOR

### **Rector of Uplyme & Vicar of Axmouth**

Rev. Jeremy White, The Rectory, Rhode Lane, Uplyme, DT7 3TX Tel: 443256

Email: [rector@uplymechurch.org.uk](mailto:rector@uplymechurch.org.uk)

Church Administrator  
and Honorary Sec PCC

Gill McMenemy

444499 (Church Office)

Email: [administrator@uplymechurch.org.uk](mailto:administrator@uplymechurch.org.uk)

Churchwardens	Robin Hodges	445180	Carole Fowkes	35884
Deputy Churchwarden	Jenny Perham	32254	Mark Trafford	443252
Treasurer	Neil Pullinger	443973		
Sexton	Jeanne Allen	445457		
Electoral Roll Officer	Shirley Hobden	443432		
Organist & Choirmaster	Brian Manners	443845		
Asst Organist	Adrian Pearson	442902		
Bell Ringers: Tower Capt.	June Moulding	445143		
Youth Worker	Irve Griffiths	444621		
Mrs Ethelston's School Head	Roger Grose	442210		
Mission Support Group	Carol Linsley	442358		
Home Groups	Don Draper	442755		
Lay Visitors Group	Carole Fowkes	35884		
Flower Group	Jenny Perham	32254		
Prayer Group	Terry Daly	445541		
Junior Church	Kate Eaton	445135		
Parish News Editor	Robin Hodges	445180		

*Redlands, Lime Kiln Lane, Uplyme, Lyme Regis, Dorset, DT7 3XG*  
*[parishnews@uplymechurch.org.uk](mailto:parishnews@uplymechurch.org.uk)*